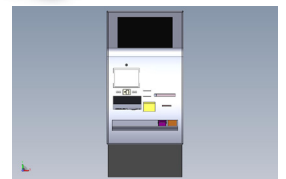
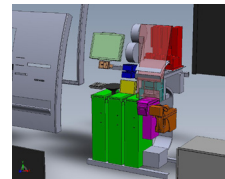
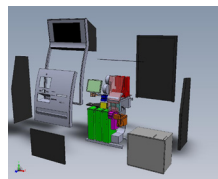
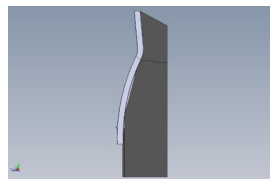
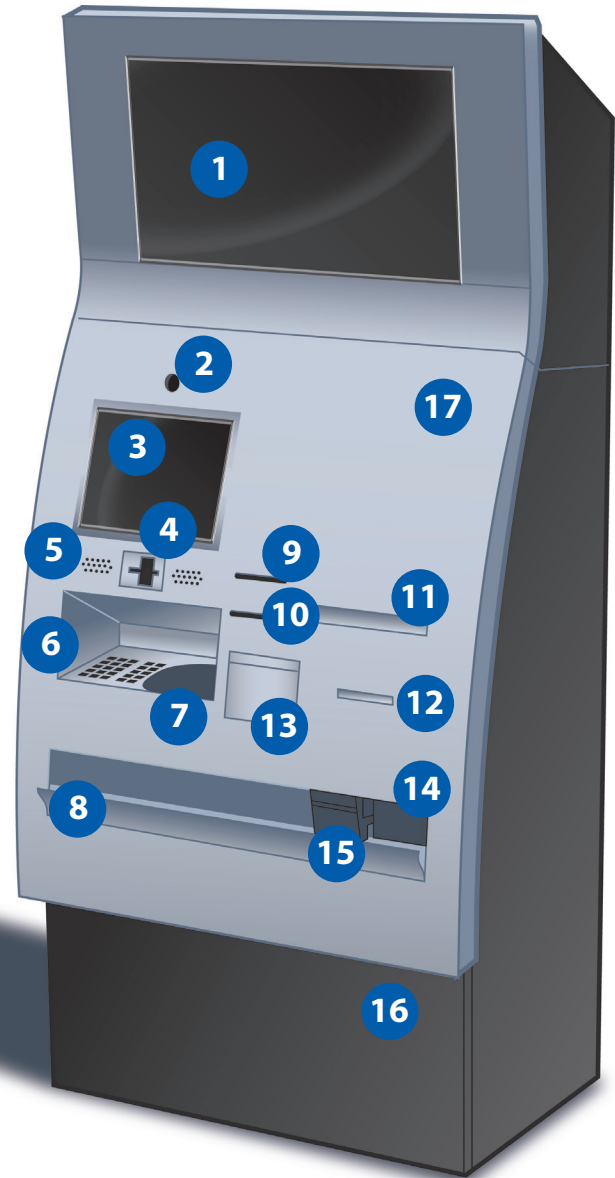




## Vision Reach FC Model #1009

- 1 DAISY (Digital Ad Insertion SYstem)
- 2 Security Camera
- 3 Touch Screen
- 4 Card Reader
- 5 Speaker
- 6 PIN Pad
- 7 Palm/Finger Scanner
- 8 Cash Dispenser
- 9 Ticket Printer
- 10 Receipt Printer
- 11 Card Dispenser
- 12 Check Imager
- 13 ID Scanner
- 14 Bulk Bill Acceptor
- 15 Single Bill Validator/Acceptor
- 16 Safe
- 17 WIFI Router



### Functionalities:

- Cash Dispensing
- Check Cashing
- Remote Deposit Capture
- Bill Payment
- Prepaid Services
- Ticket Dispensing
- Card Dispensing
- Digital Advertisement
- Account Opening
- Internet services

### Three-Levels of Security:

- First Level: Allows clerk access to replace receipt ribbon only.
- Second Level: Allows access to first level as well as access to card dispenser and check imaging.
- Third Level: Allows access to safe for purpose of accessing currency cartridges.

### Features:

- Three Cash Dispensers with up to 6 cartridges each
- Three Card Dispensers holding 500 cards each
- Americans with Disabilities Act Compliant
- Components are certified and conform to Industry Standards and Best Practices